

AN ANCIENT RHYME

THE NEW ODE

LOCATION: KunMing China
TYPE: Restoration and Preservation of Historic Buildings
Area: 4330 m²

The traditional Chinese principle for the protection of ancient buildings is to repair their damaged or missing parts based on characteristics of ancient buildings, so as to mimic the closest style to the original appearance. However, ancient architecture is not always a complex and consistent existence, but, sometimes, remained as components of architecture, such as broken walls, windows, single column or other structural elements. My opinion is, the broken elements also share values and deserve to be remained or reforged.

This project, viewing each element as a single and valuable constitutions of buildings. It proposed a new concept "the Law of Conservation of Architecture", which develops a methodology to evaluate the attributes and values of all the components of the ancient building throughout the entire site and historical stream, and integrates the traditional architectural elements with modern materials and technologies to create a "timeless space" that transcends the boundaries of time and style, and to make this space a bridge connecting the past, the present and the future.

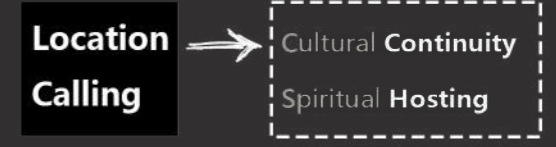
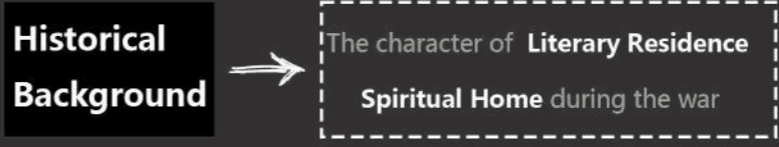


MAPPING

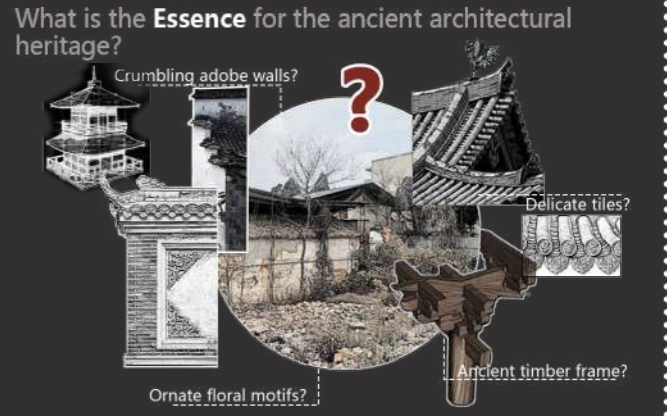
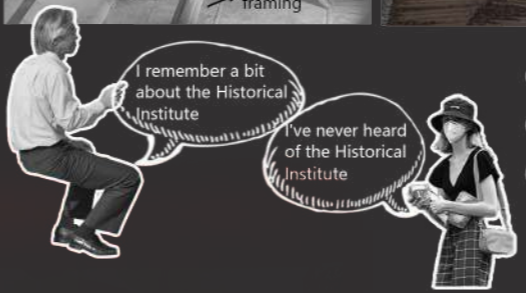


CONCEPT

Step1: Analysis of Site Characteristics



Step2: Summary of Place Issues

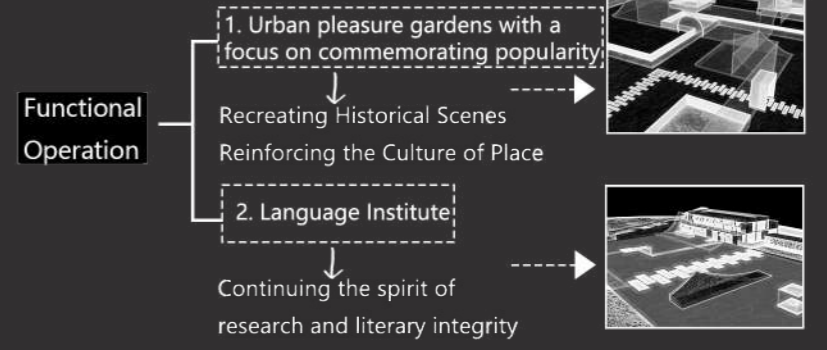


We do not want to materialize the reconstruction of monuments, but rather we favour the individual interpretation of heritage by the users. By preserving heritage while enhancing the culture of the place, and introducing new elements to update the user experience, we want spaces to **blur the boundaries** and make the **past and the present reflect each other**.

Step4: Analysis of Design Positioning

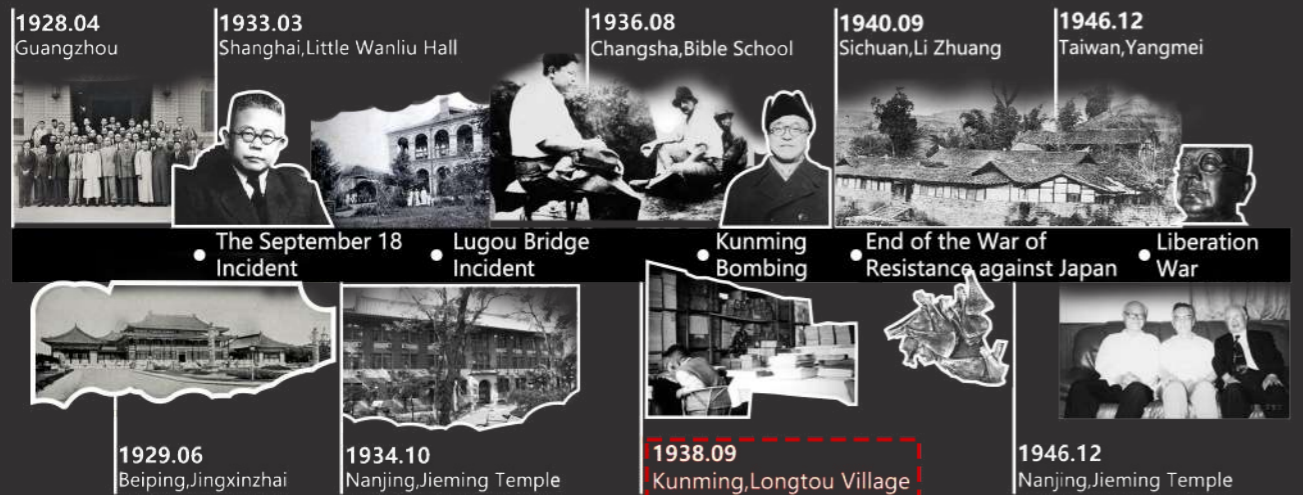
Design Positioning
New Age Humanistic Architecture:
Memories + Prospects + Reinvention

Functional Operation & Design Approach

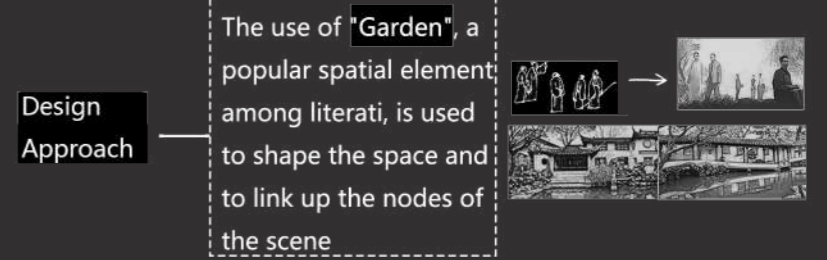
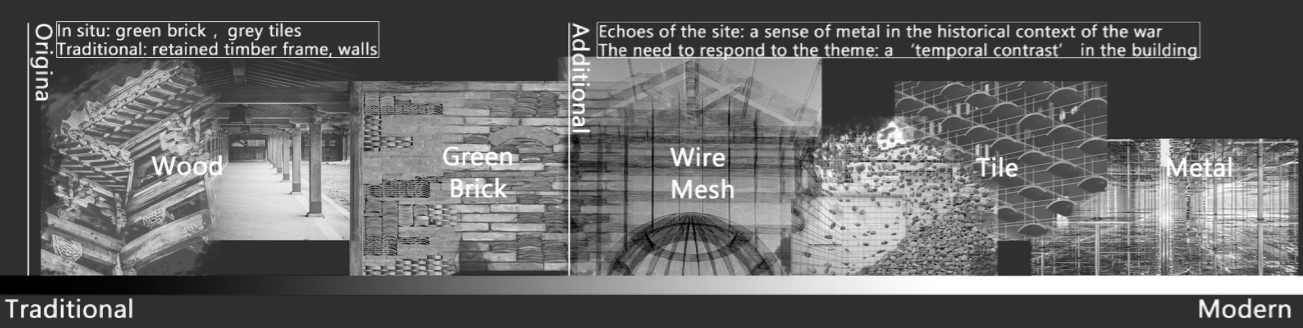


We hope to create a **'Temporal Contrast'** in the building, deconstructing the **contrast between the 'past' and the 'present'**, allowing the spatial fragments of the past and the present to interpenetrate, and allowing the threads of culture and time to The building is integrated into the architecture.

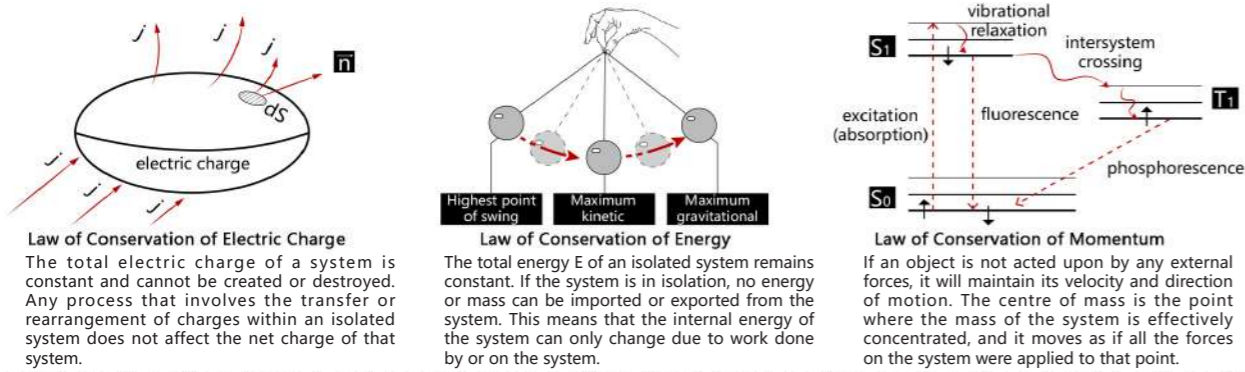
HISTORY OF THE HISTORICAL INSTITUTE



MATERIAL ANALYSIS

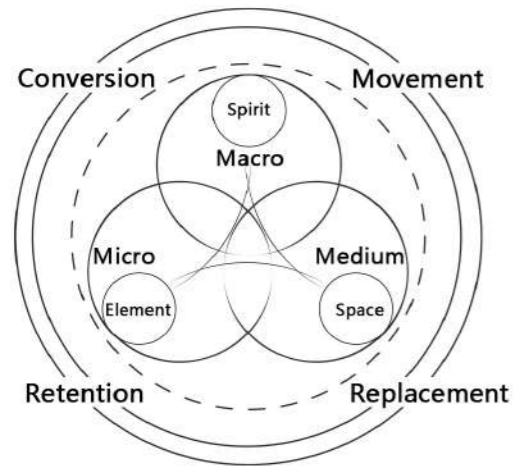


"THE LAW OF CONSERVATION OF ARCHITECTURE" CONCEPT

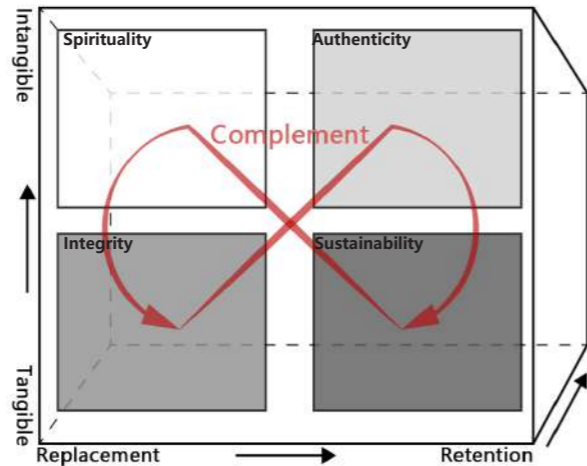


'The Law of Conservation of Architecture'

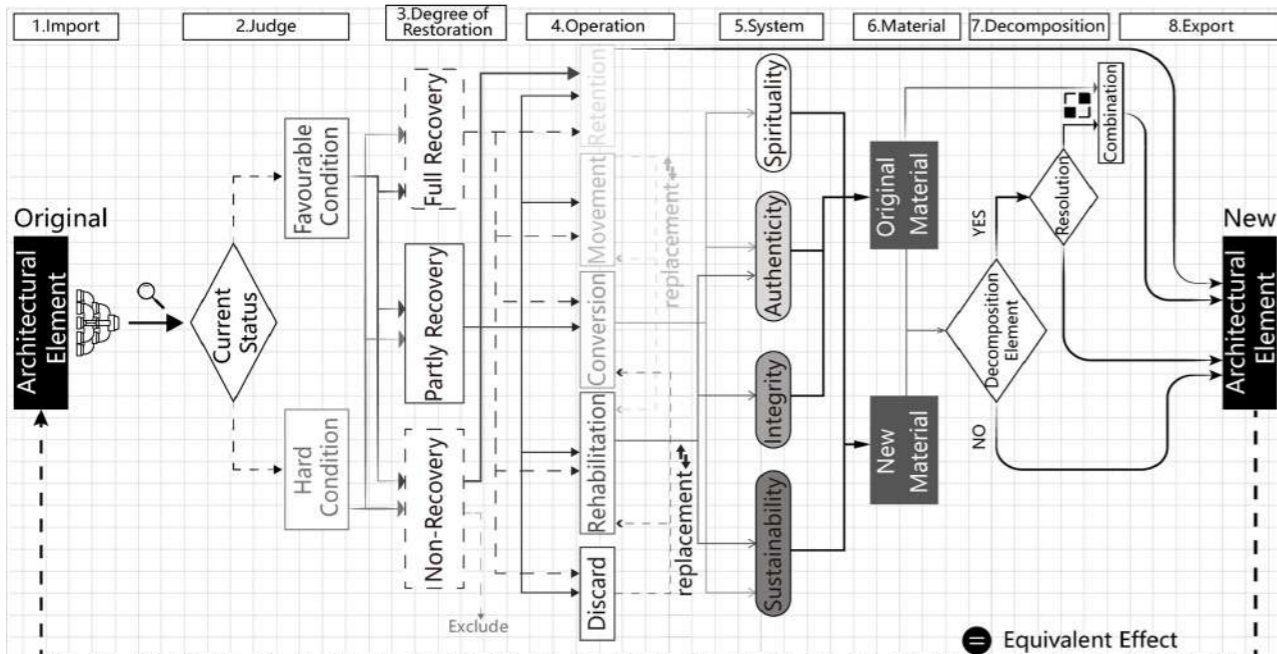
Logical Diagram



Protection System

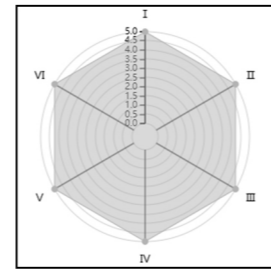


When it comes to the renovation and restoration of ancient buildings, I propose a **new concept**, the **'The Law of Conservation of Architecture'**, by analogy with the various conservation laws of physics. This concept is intended to guide decision-making and practice in the process of restoration of ancient buildings in order to protect and preserve their historical and cultural values. By distinguishing between **tangible or intangible protection** of ancient building elements, for different protection measures, it is possible to set up a three-dimensional coordinate axis representation of the system of ancient building protection, and the types of protection are divided into four categories: **Authenticity, Spirituality, Integrity, and Sustainability**. It is defined as a **system** of excellent renovation or restoration of an ancient building in which, even if there are different **operations on the internal elements** of the building, in general, these practices will ensure **the integrity of the building**. That is, the internal elements of the building will **not be reduced or increased**, and the original elements will be **deconstructed or reconstructed** according to the actual situation to supplement the building system.



DECONSTRUCTION AND REORGANIZATION OF ANCIENT CHINESE ARCHITECTURE

Through the components of the **Form, Structure, Materials, Artistic Aesthetics, Cultural Value** and **Functional** aspects of a comprehensive examination, can be **more comprehensive judgement** of an ancient building components of the originality and integrity. This is an important basis for the assessment and protection of ancient buildings.

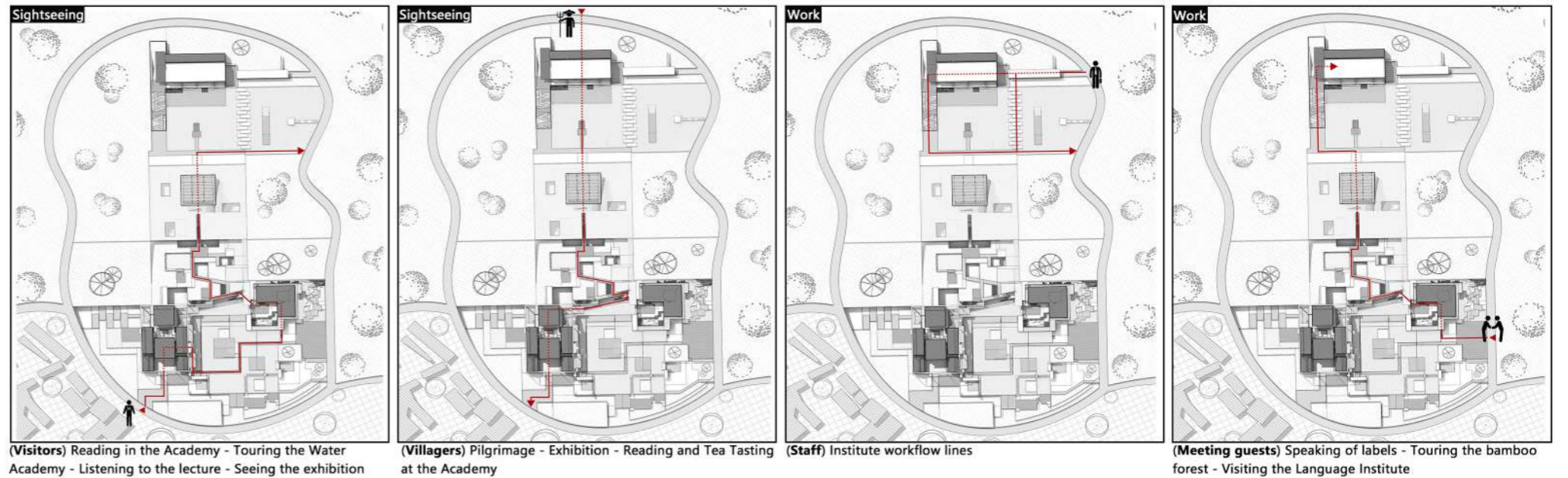
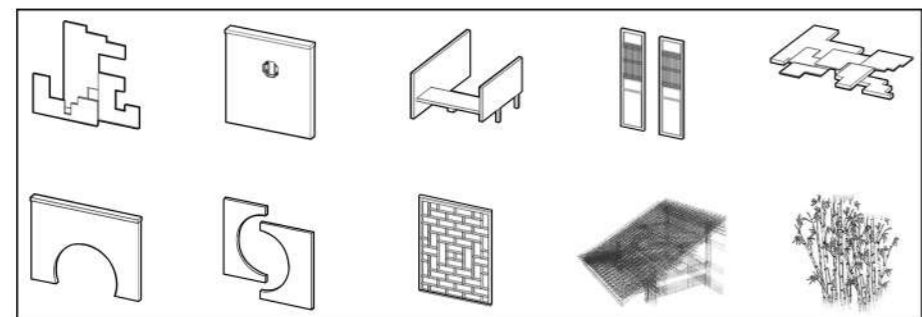
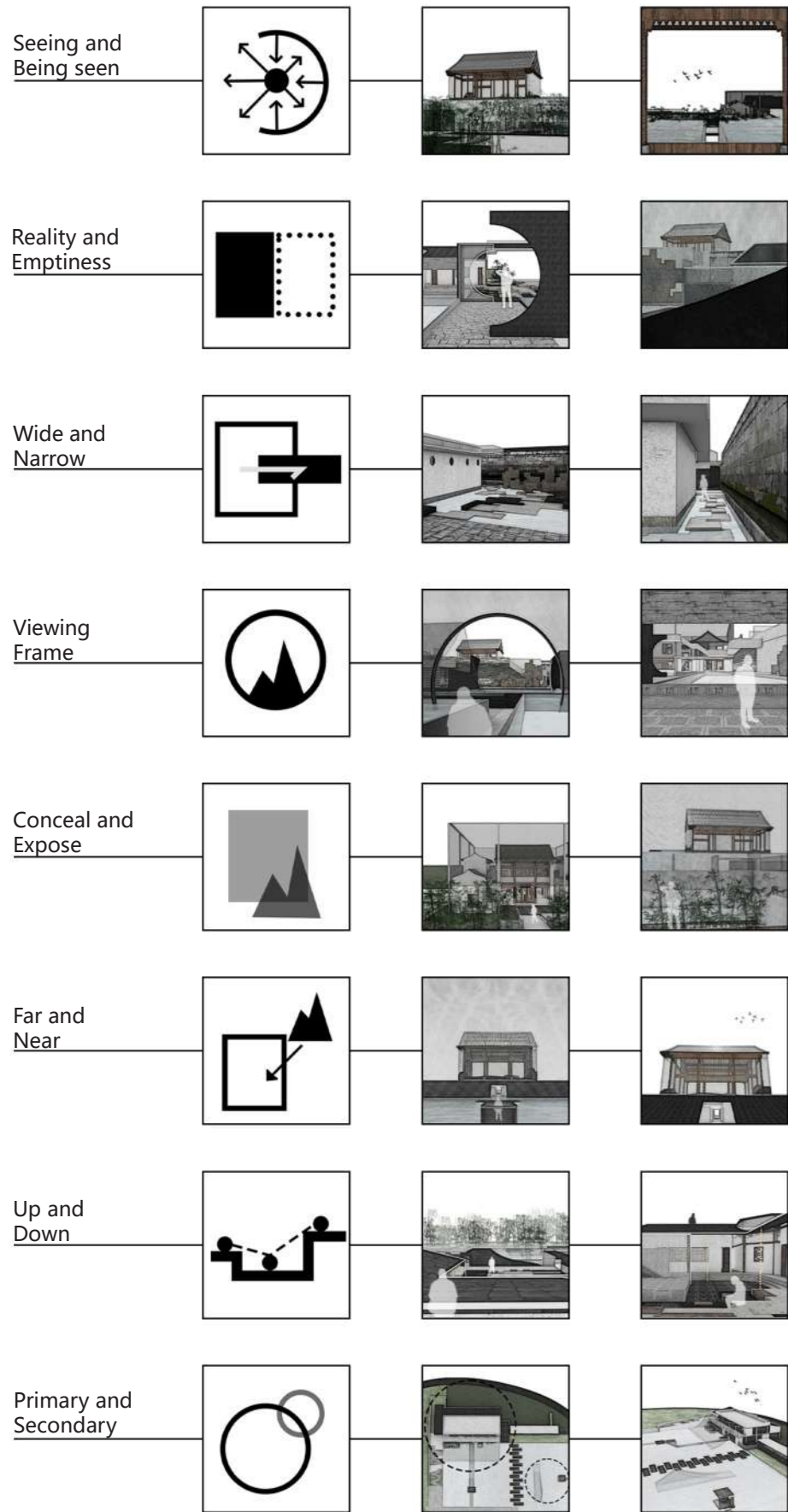


— Example —

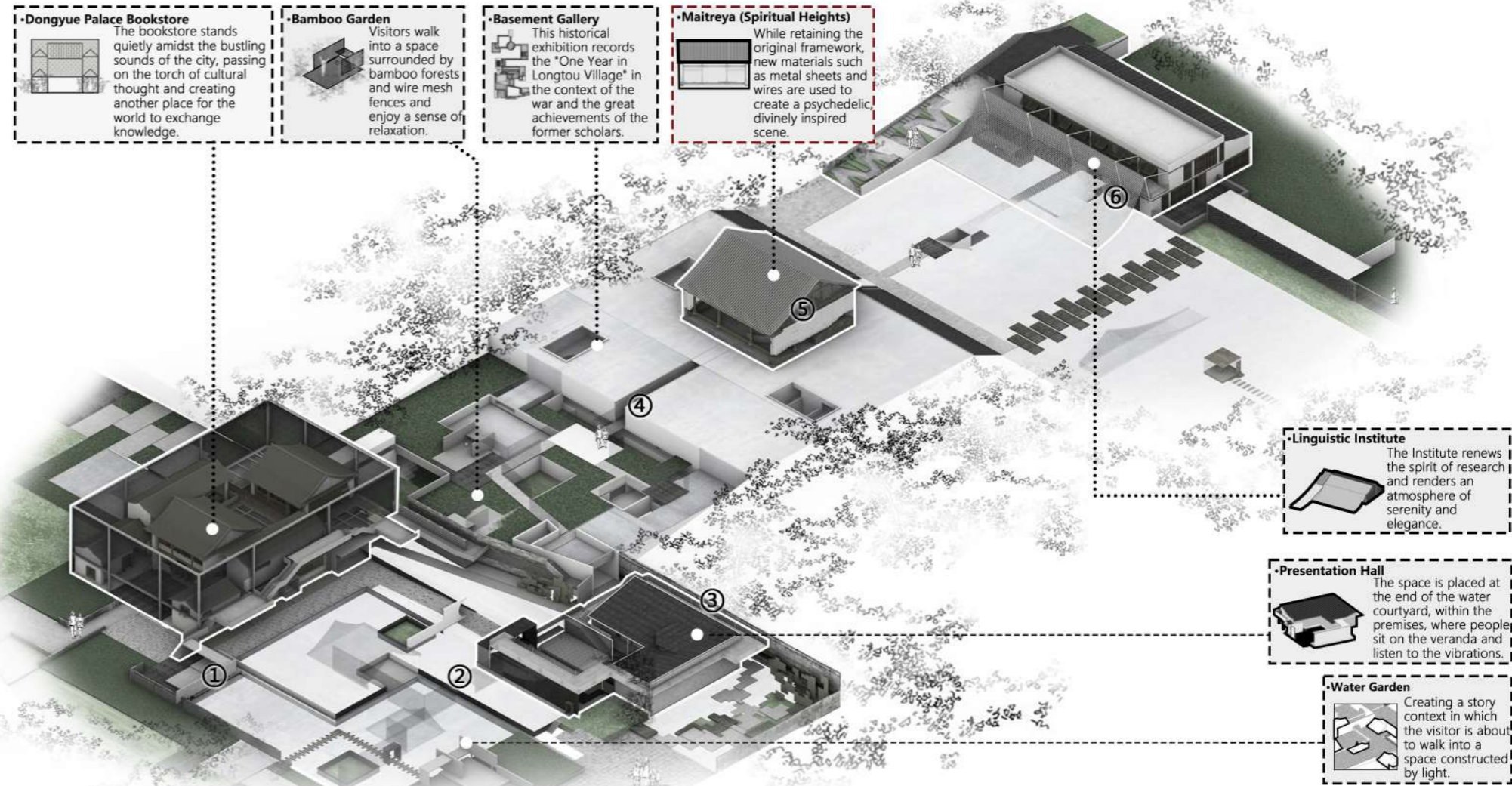
- I: Form**
Check that the original shape and form of the component remains intact with no deformation or loss.
- II: Structure**
Check the integrity of the main structure of the building, such as the walls, beams, which is directly related to the safety of the building.
- III: Material**
Verify that the materials used are original and that they are in good condition and have not been replaced or altered.
- IV: Artistic Aesthetics**
Consider whether the colours on the components are intact. Observe whether original features and details are retained on the components.
- V: Cultural Value**
Evaluate the historical context and period value of the component. These may represent specific religious, clan, regional or social meanings.
- VI: Functional**
Assessing the functional can help determine whether they can continue to fulfil original function and meet modern needs and safety.

Classify	Judgment	Element	Material	Updated Principles
Beam			Wood	Authenticity
Adobe Wall			Brick	Spirituality Integrity
Stigma			Stone	Spirituality Sustainability
Corbel Bracket			Wood	Spirituality Integrity
Door			Wood	Authenticity Integrity
Shutter			Wood	Authenticity Integrity
Carving			Wood	Spirituality Authenticity

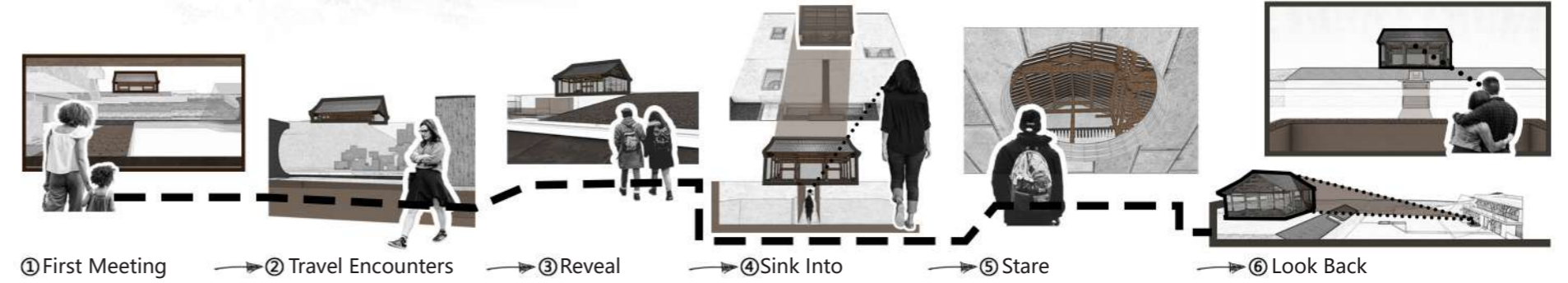
RECONSTRUCT TRADITIONAL CHINESE GARDEN ELEMENTS SITE ROUTE PLANNING



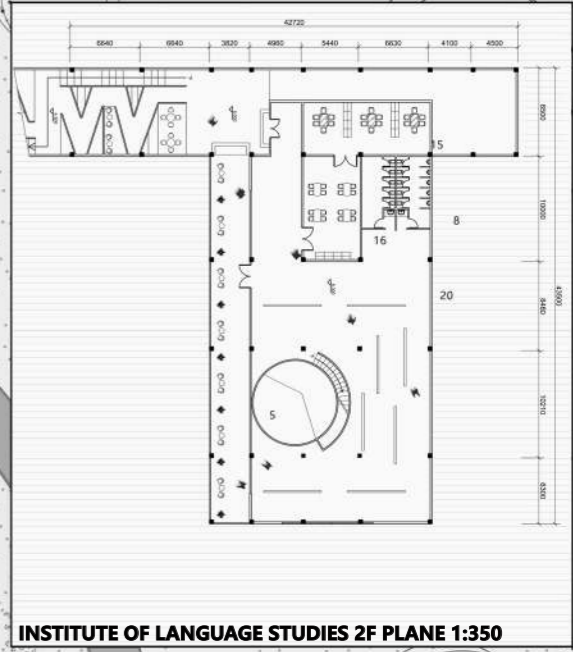
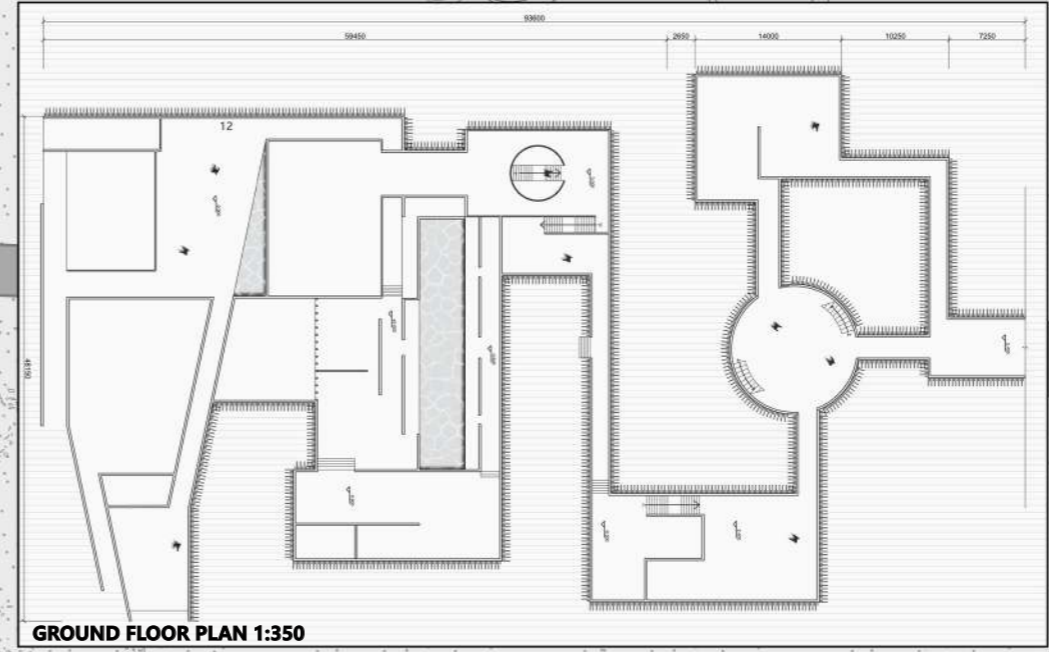
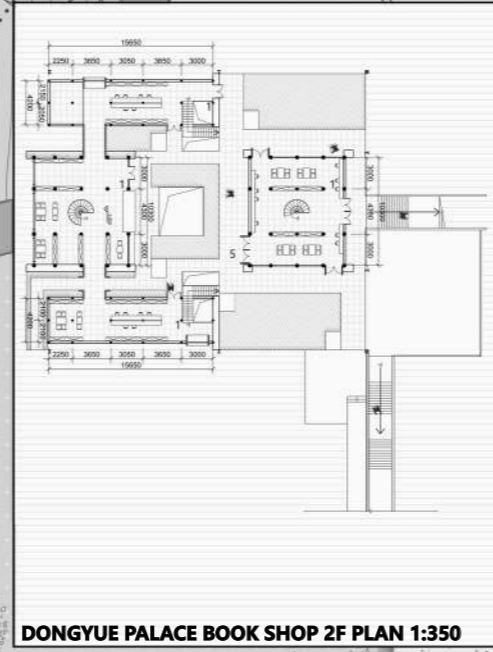
SPATIAL SEQUENCES



SPIRITUAL AXIS



OVERALL COMPLEX 1F PLAN 1: 350



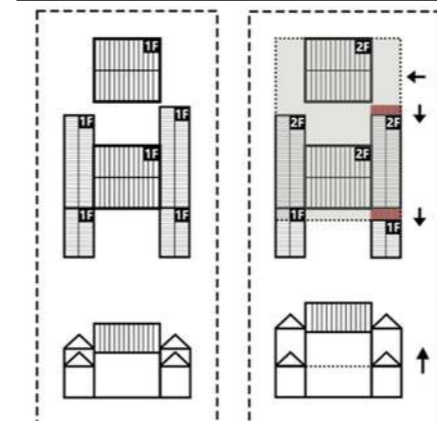
- 1. Reading Room
- 2. Tea room
- 3. Used book recycling area
- 4. Second-hand book self-service vending area
- 5. Outdoor recreation area
- 6. Logistics storage room
- 7. Tea break area
- 8. Toilet
- 9. Reception area
- 10. Presentation platform
- 11. Outdoor corridors
- 12. Underground exhibition space
- 13. Maitreya Temple
- 14. Security Room
- 15. Meeting Room
- 16. Office
- 17. Lobby
- 18. Sunken courtyard
- 19. External ramp
- 20. Exhibition space



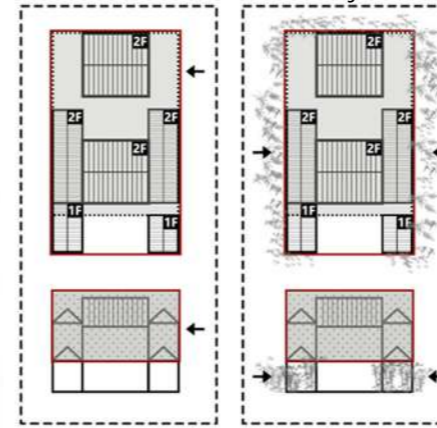
EPISODE 1: TALENT ALL OVER THE PLACE



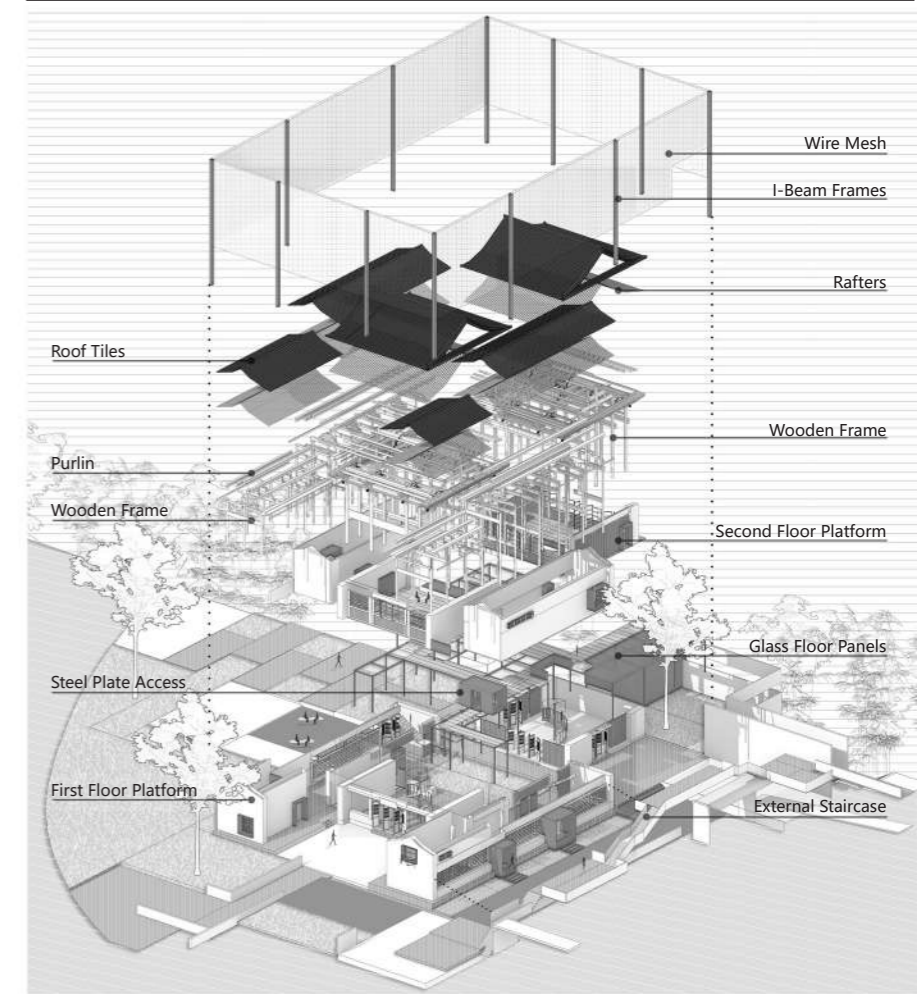
RENOVATION STRATEGY



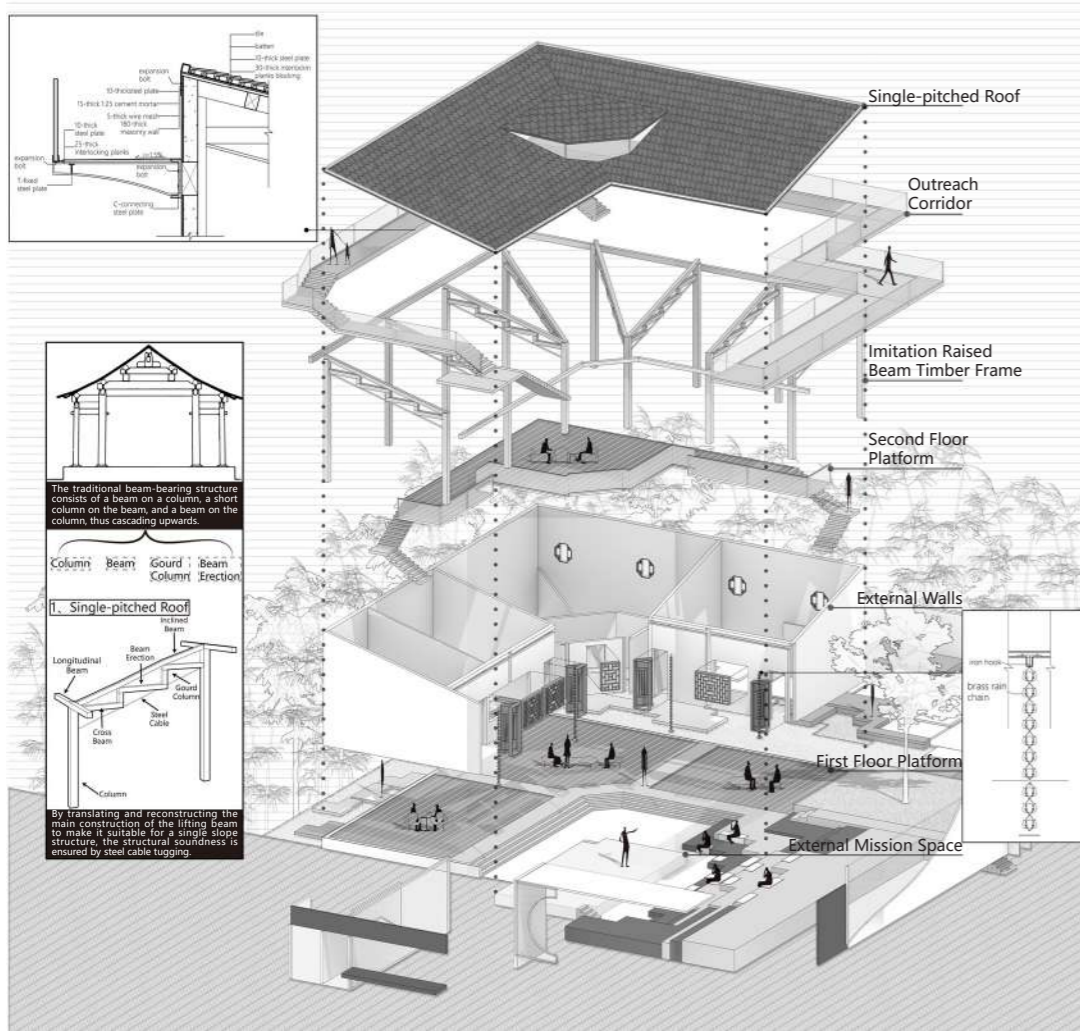
The use of metal mesh around the roof of the old building creates a hazy sense of inauthenticity



DONGYUE PALACE SEOWON EXPLODED IMAGE

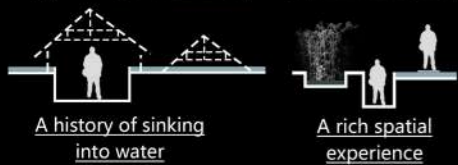
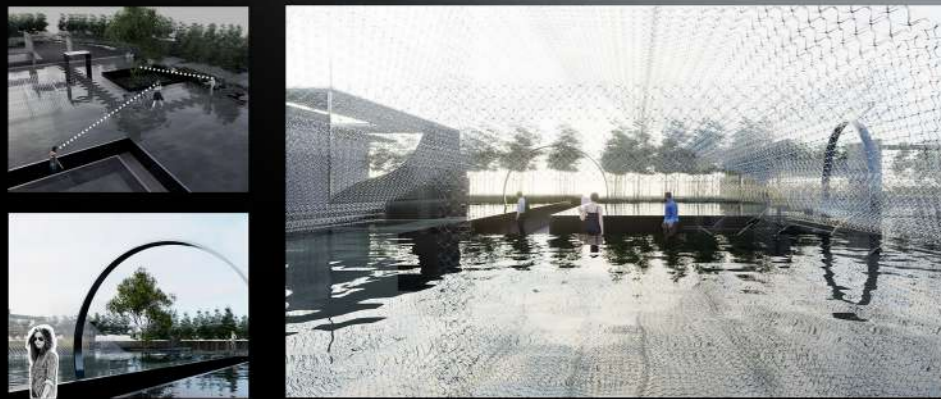


LECTURE HALL---FULL OF VIM AND VIGOR



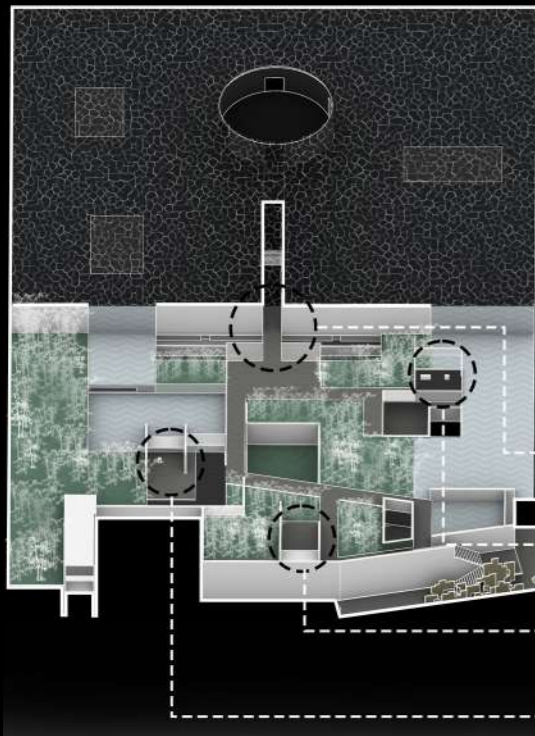
EPISODE 2: ANCIENT AND MODERN REALMS

WATER YARD



Use of 'contrast' relationships to suggest transitions:
 1. water and wood facing each other
 2. the 'virtual' and the 'real'
 3. heavy architectural and light natural scenes
 Creating a story context in which the visitor is about to enter a space **constructed by time and space**.

BAMBOO GARDEN



The space is a transitional space between the water garden and the Maitreya Temple, and the relationship between the bottom of the figure follows the natural formation of the patio and waterfall created by the underground space. The visitor walks into the space enclosed by a bamboo grove and wire mesh to enjoy some relaxation.

Sink into the water
Find purification

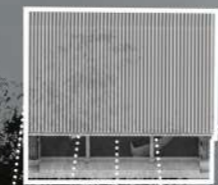
Bamboo forest and waterfront
Resting on a tiled floor

Overlooking the water yard
Seek out the time of day

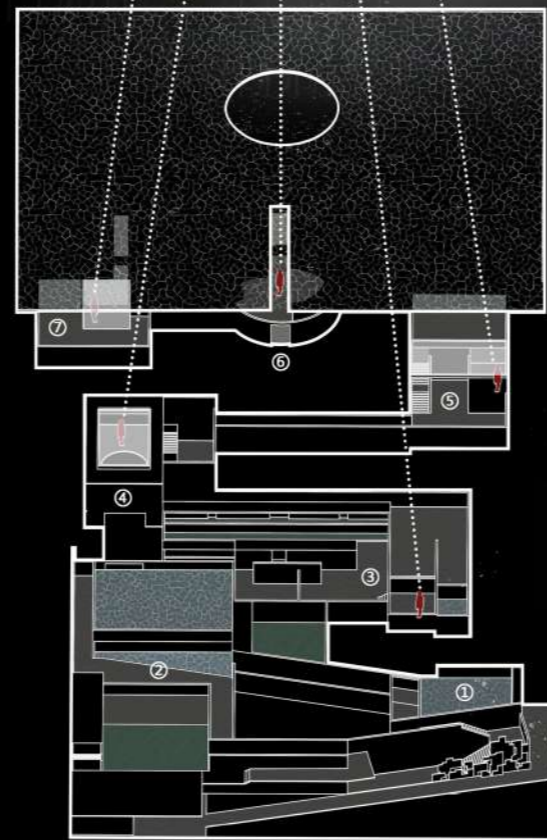
Look up to the Maitreya Temple
Look to the future



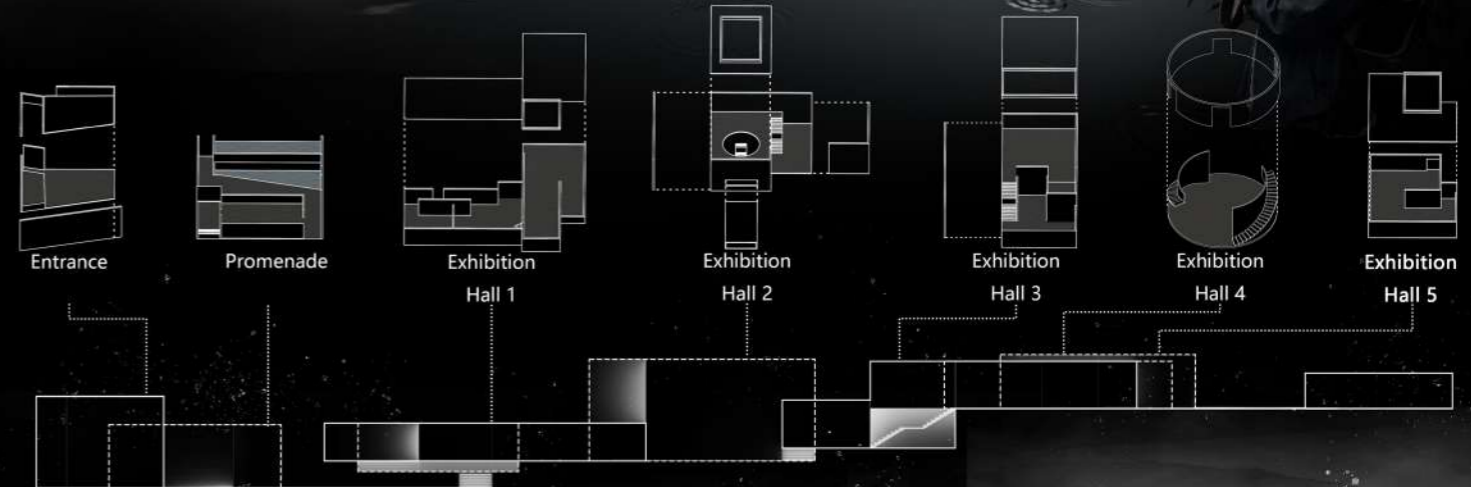
"Spiritual Heights"



Maitreya Temple
Water Surface
Glass

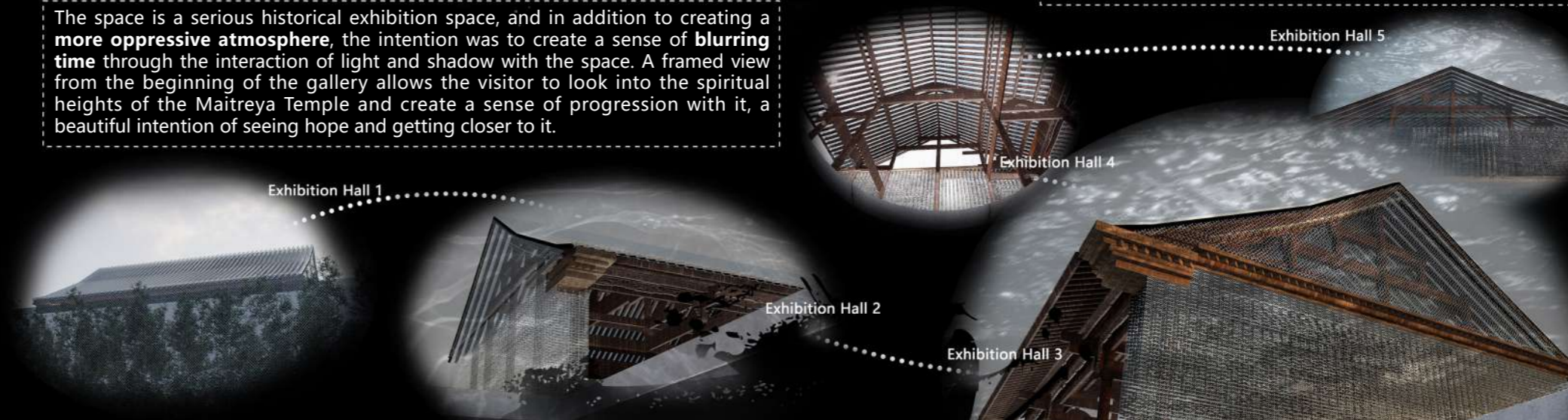


GROUND FLOOR EXHIBITION HALL



The ground floor gallery displays the **stories of scholars** who preserved and diligently researched the precious heritage of the motherland during the difficult years of the war.

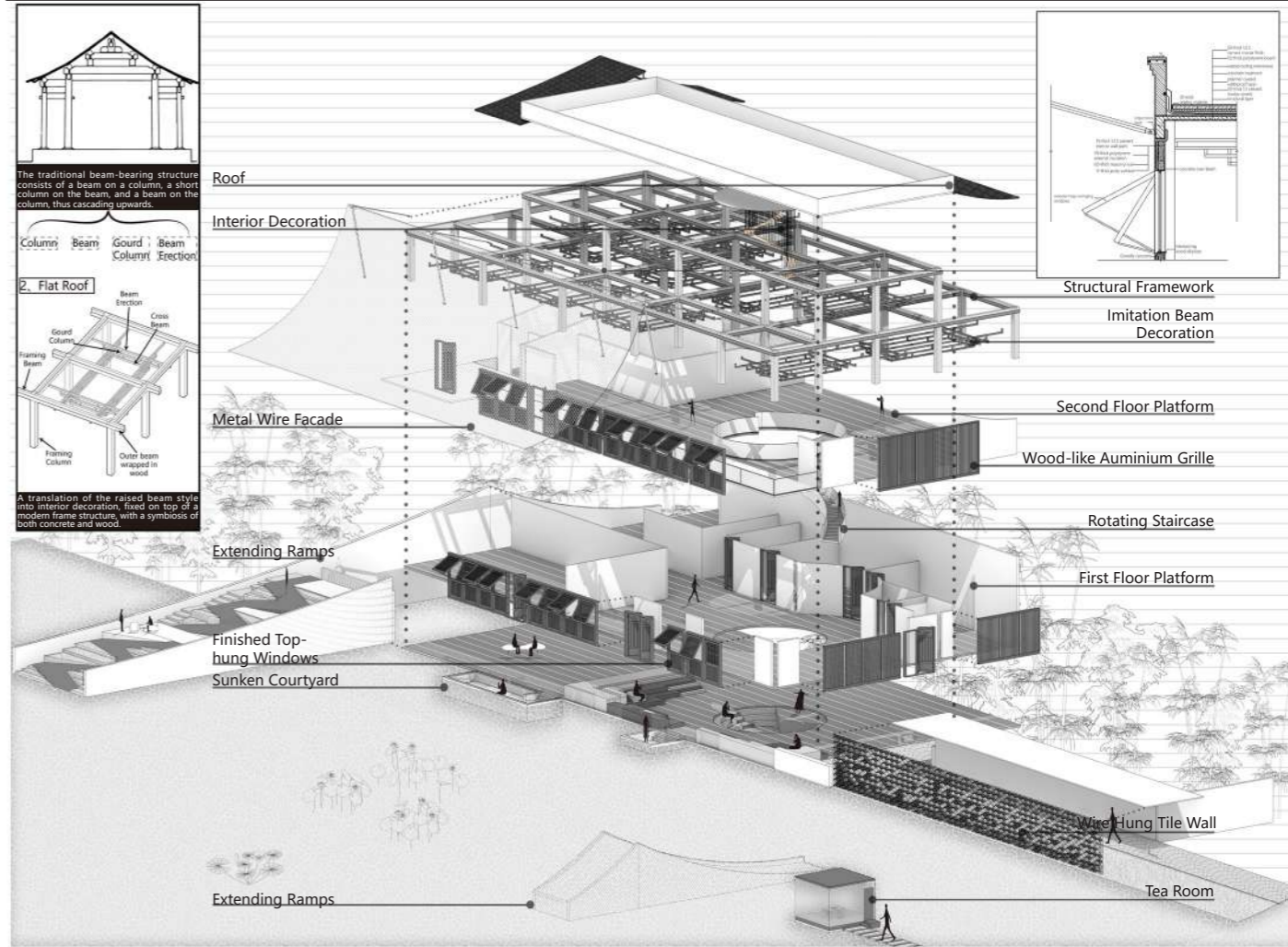
The space is a serious historical exhibition space, and in addition to creating a **more oppressive atmosphere**, the intention was to create a sense of **blurring time** through the interaction of light and shadow with the space. A framed view from the beginning of the gallery allows the visitor to look into the spiritual heights of the Maitreya Temple and create a sense of progression with it, a beautiful intention of seeing hope and getting closer to it.



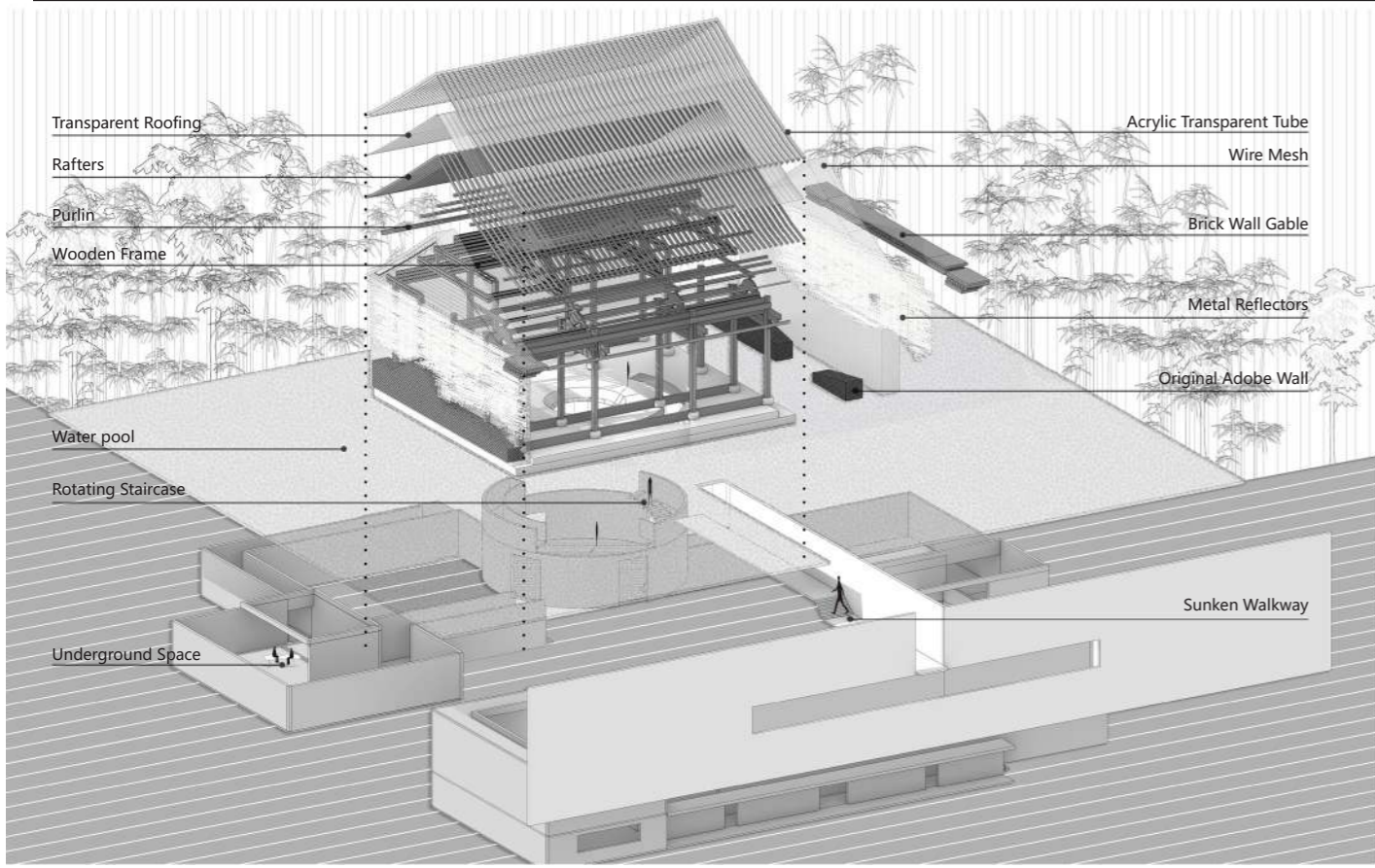
EPISODE 3: CONTINUING THE CULTURAL LINEAGE



LANGUAGE INSTITUTE---HOUSE HILL ELEGANT GATHERING



MAITREYA TEMPLE---HARMONY OF LIGHT AND DUST



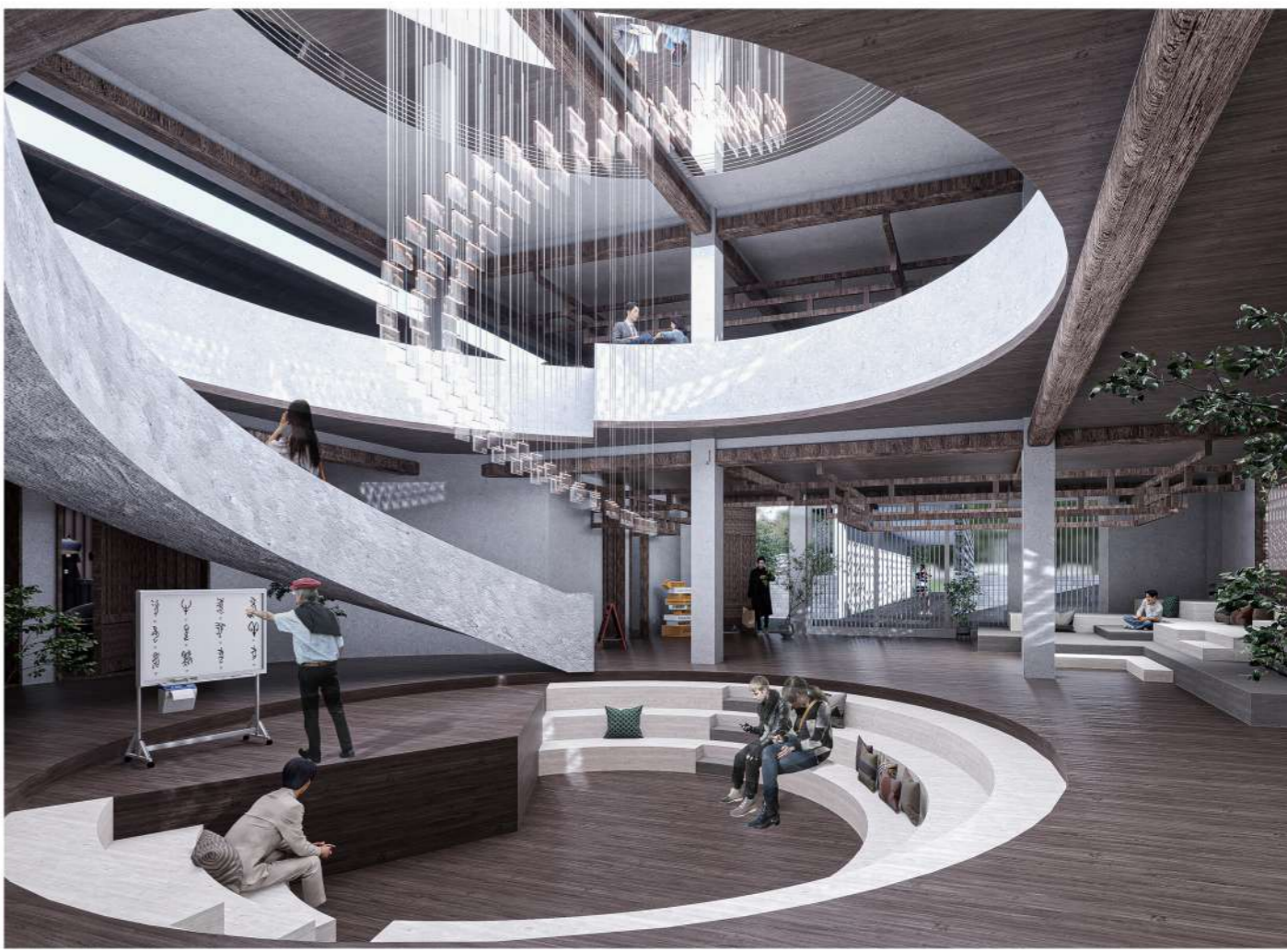
- 

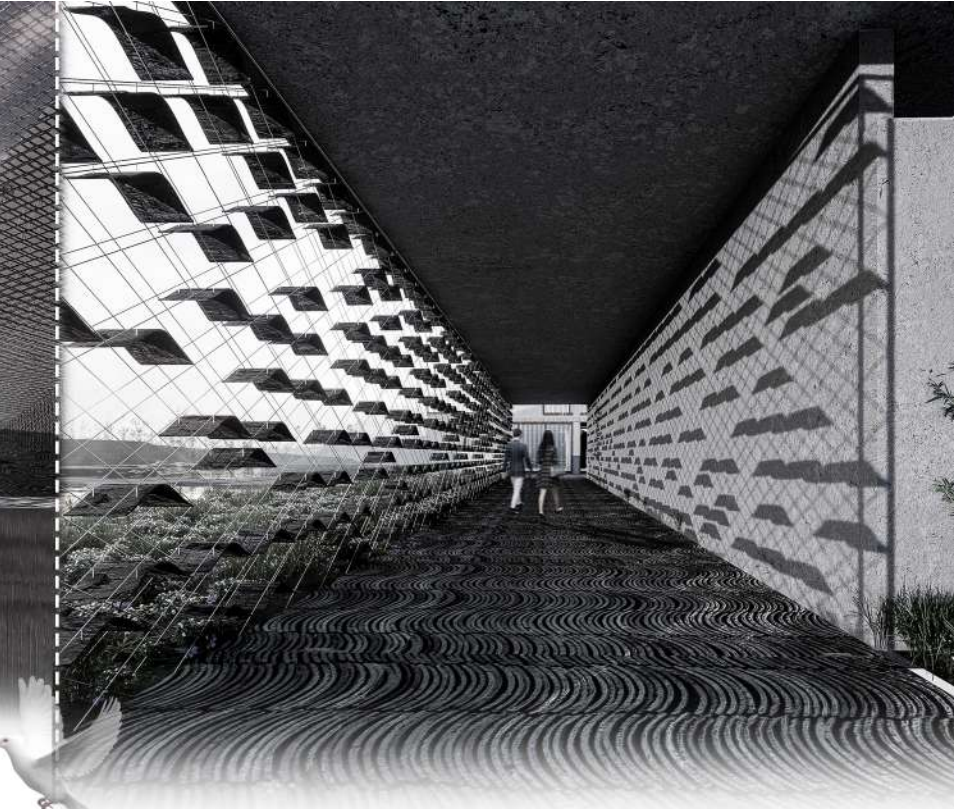
Awe
Guided by natural light, people enter the space with a sense of awe
- 

Sacred
A sacred scene through the reflection of natural light by a metal sheet
- 

Realism
Solid timber frame against illusory wire mesh
- 

Interlacing
Retain the combined use of timber framing and wire mesh

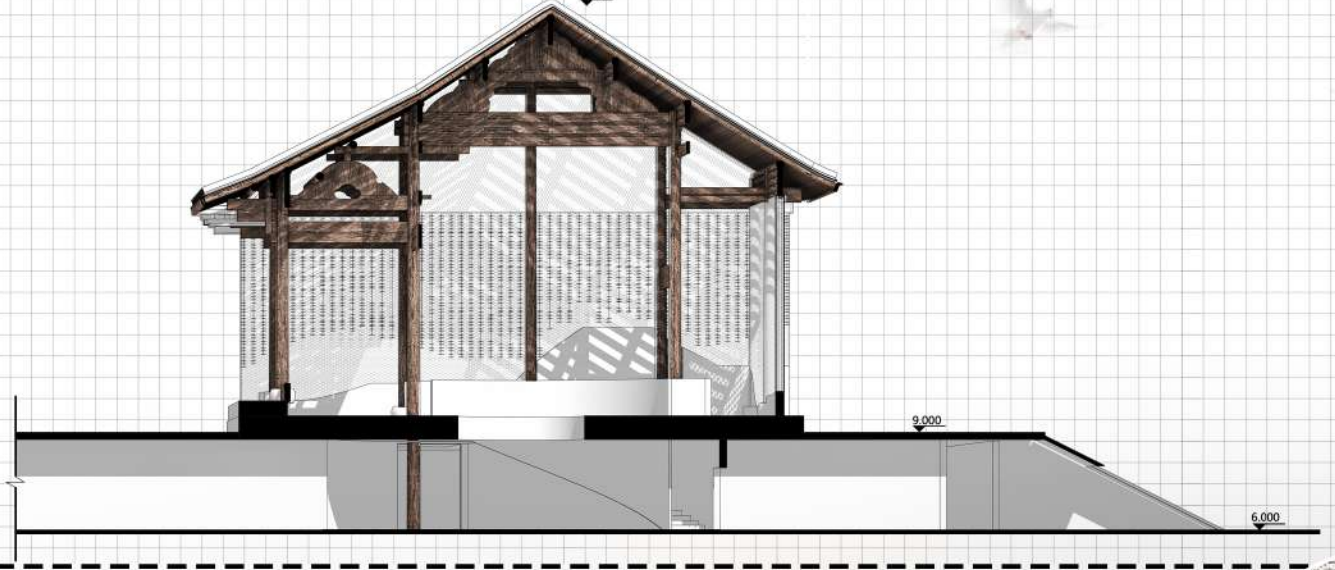
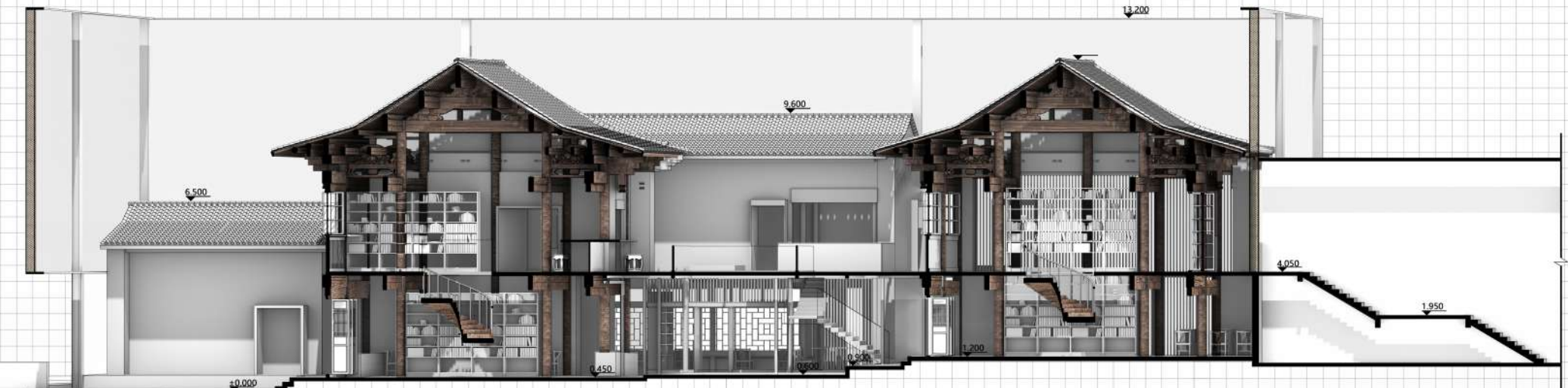




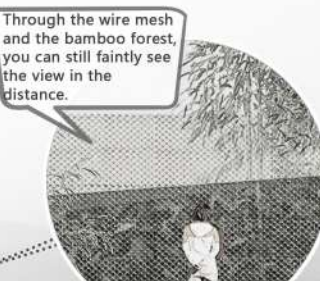
DONGYUEGONG SEOWON CUTAWAY PERSPECTIVE 1:100

MAITREYA TEMPLE CUTAWAY PERSPECTIVE 1:100

LINGUISTIC INSTITUTE CUTAWAY PERSPECTIVE 1:100



SITE PROFILE VIEW 1:200



The book I've been wanting to buy for my collection came to me today

There's no better place to sit in the breeze and enjoy the view.

Whose writing is this? It's good.

After I finish my homework at school, I want to come here every weekend to read.

Through the wire mesh and the bamboo forest, you can still faintly see the view in the distance.

It's so beautiful. It's a mecca for photos, I wish I could stay here forever!

Dazzling pieces of metal, old wooden frames, light pouring down from above, God, I feel like I've been purified.

It's a new and different approach this time, and I'm feeling motivated again!

The lecture is about to start later, and after it's over I'd really like to talk to the master.

These models are so beautiful, you could call them works of art!