



# 01

## Alley, Yard, Room

*Community Elderly Centre In The Historical District*

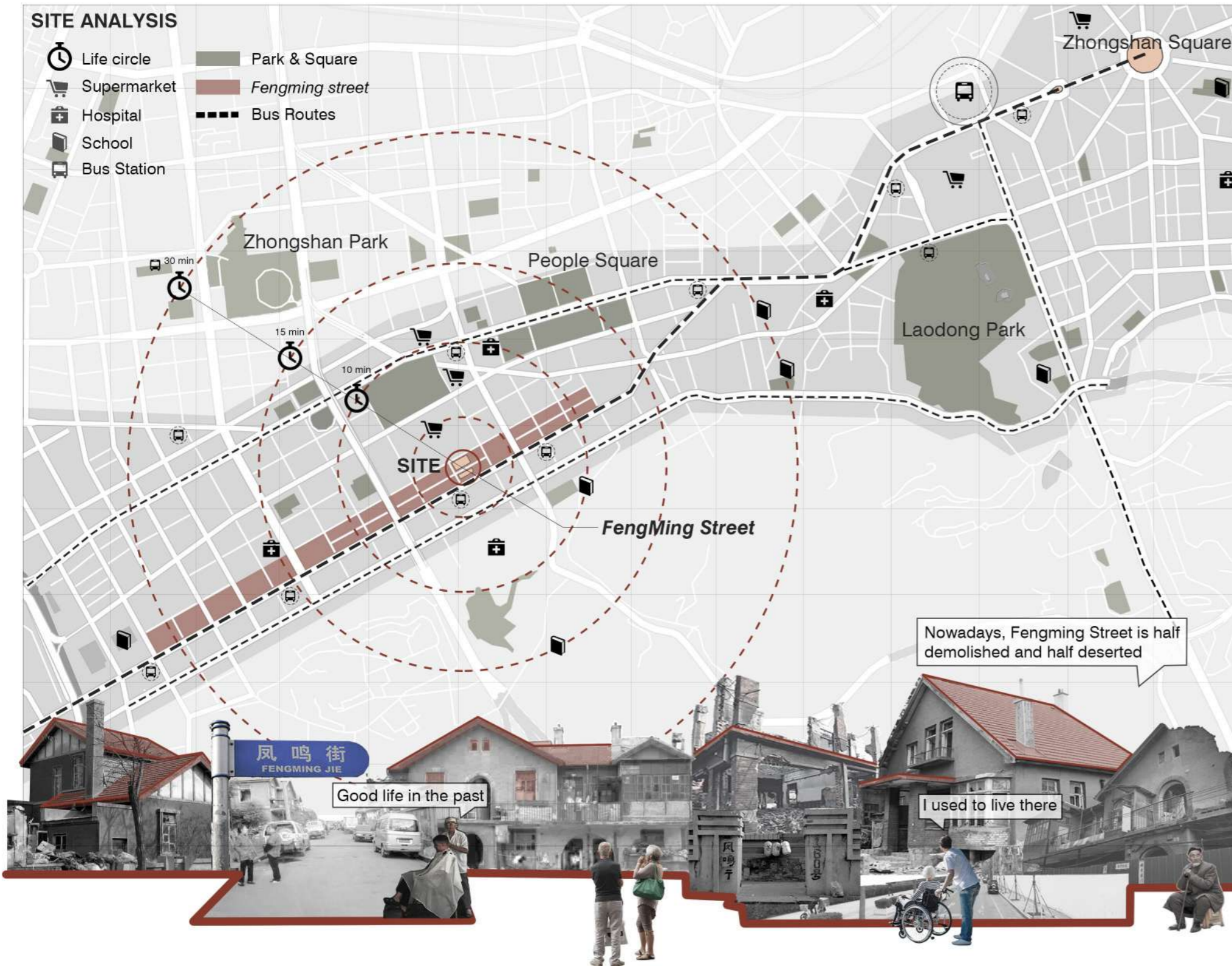
In 1898, the Russian designers came here with the blueprints of the city construction in Paris, France, with the intension of building another city mainly of squares here, they named it Dalini; In 1905, the Japanese occupied Dalini and renamed the city Dalian again, and our country has been using it ever since. Dalian's past has brought a wealth of historical buildings, which are also imprinted in the memory of old Dalian people. For example, Fengming Street, a relatively well-preserved old neighborhood in Dalian, is a 1,200-meter-long, 60-meter-wide that carries countless historical traces and has a history of nearly a hundred years. There have been new Japanese-style architecture by, many celebrities have lived here, and it is also the memory of many local elderly people for most of their lives. However, the quality of these buildings is generally not good: the interior space of each building is unreasonable; The streets are inhabited by a mixture of people, thus the law and order is chaotic; Lack of sanitation and garbage facilities; A large amount of waste was accumulated in the yard, and the smell was stinking. A large number of similar problems have made the residents here always look forward to building renewal. Contrary to wishes, Dalian's most complete historic district has become fragmented, leaving only a few buildings and a large number of ruins. After several demolitions and criticisms, the Dalian government included the dilapidated Fengming Street as a historical and cultural district, but the local elderly and nearby residents are long gone.

Through design, I hope to recreate the memories and scenes of the past for the local elderly and nearby residents. In order to achieve this goal, first of all, I analyzed the historical context and traffic texture of the old neighborhood, and found that in the process of demolition, the original courtyard-style closed residential model was broken, forming a new house alley, which connected different houses and passed through different yards, becoming a new texture and vein. On this basis, select the local characteristic materials and the characteristic vocabulary of the building, and place the alley yard with the house Integration into a new community centre for the elderly. The centre not only provides services such as hosting, activities and accommodation for the elderly in the local area, but also serves as a new local activity centre for nearby residents to use.

Location: DaLian,China  
Academic: 12/2021 - 06/2022  
2021/2022 2nd Semester  
Individual Work  
Tutor: Zhang Lingshan

## SITE ANALYSIS

- Life circle
- Supermarket
- Hospital
- School
- Bus Station
- Park & Square
- Fengming street
- Bus Routes



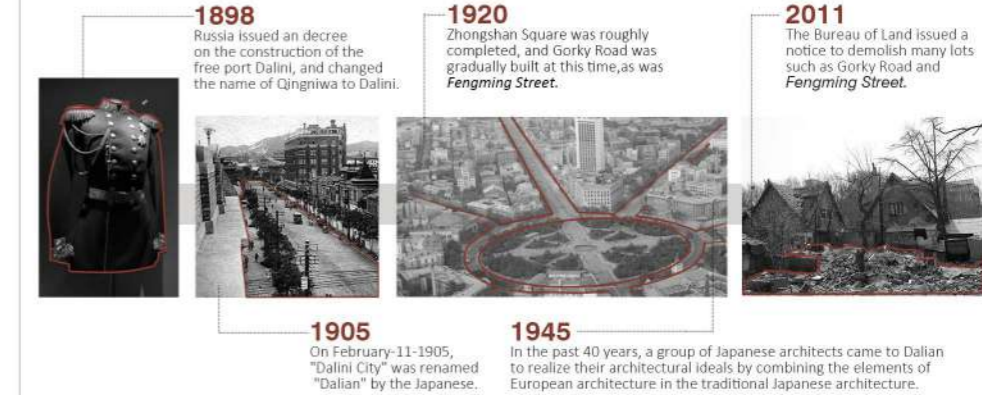
## BACKGROUND



### What kind of neighborhood is it?

Fengming street is a relatively intact one among Dalian Old streets. About 6 meters wide and 1,200 meters long. It has a history of nearly 100 years. More than 100 Japanese-European-style architectures were built in the 1920s, 30s and 40s on both sides of the street. Small buildings are unique in shape and rarely complex, all are equipped with separate courtyards. They have extremely high heights of ornamental, research and historical value.

## HISTORICAL ANALYSIS



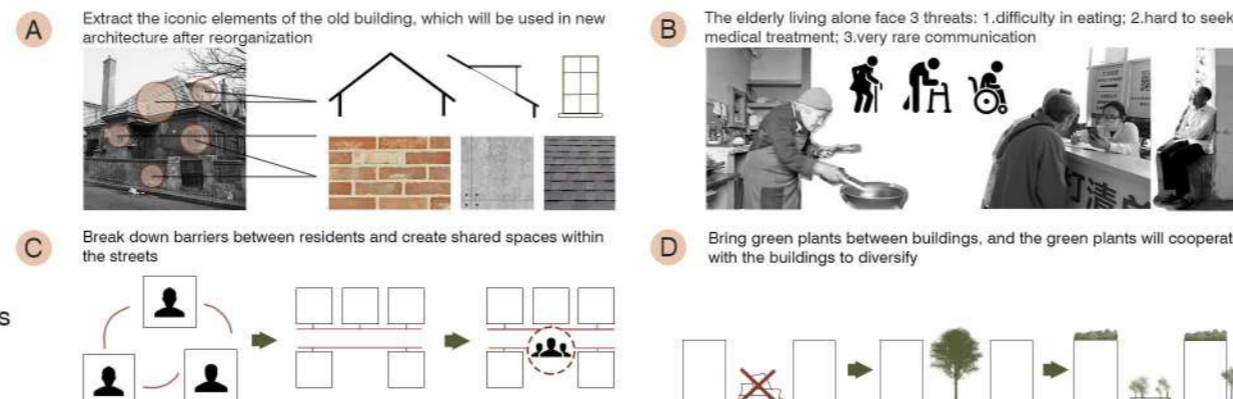
## CROWD DEMAND



## CURRENT PROBLEMS

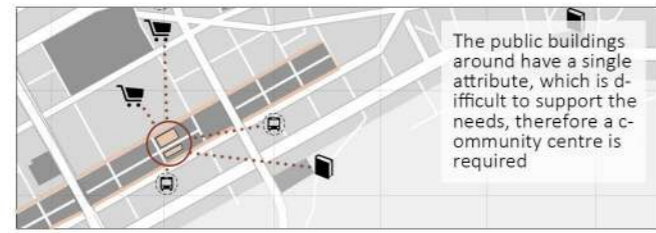
In the past few decades, Fengming Street has become a blind spot in the city. Young people are moving away, leaving the elderly in urgent need of spiritual comfort. The space is occluded, resulting in low social participation, not to mention lack of green space and poor environment...

- A Preserving the old memories
- B Elderly care obligations
- C Communication among residents
- D The depressed living space



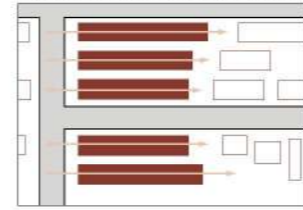
# SCHEMA GENERATION

## SITE

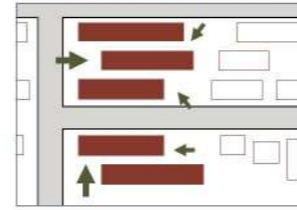


The public buildings around have a single attribute, which is difficult to support the needs, therefore a community centre is required

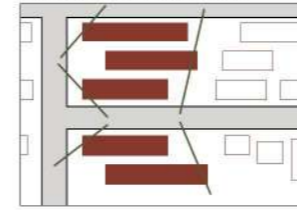
Place the boxes according to the texture



Adjust the shape by the entrance



Cut box edges to fit the base



## SPACE

What kind of space benefits the elderly the most?  
What kind of space suits the elderly the most?  
What kind of space do elderly like the most?



central courtyard



bright corridor



green land



study room



What kind of space benefits the visitors the most?  
What kind of space suits the visitors the most?  
What kind of space do visitors like the most?

roof garden



clear view

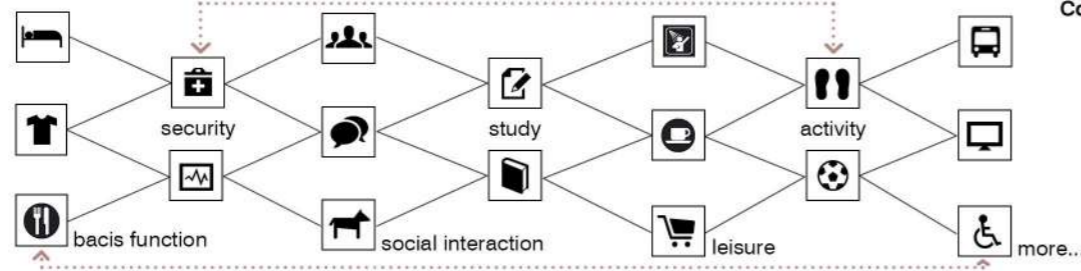
child venture



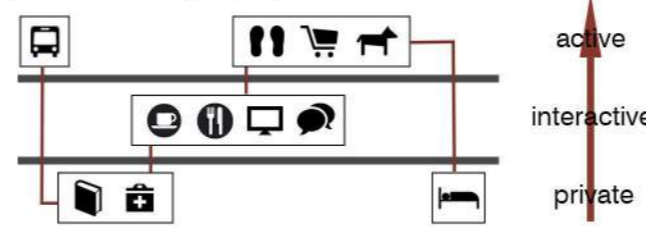
art hall



## FUNCTION

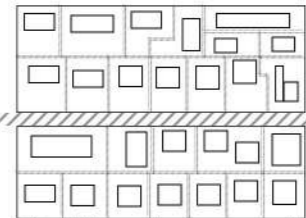


Complex functions require proper organization

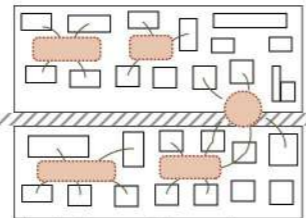


active  
interactive  
private

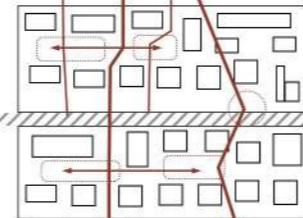
## CONNECTION



The old house has its own yard, resulting in bad transportation and weak contact

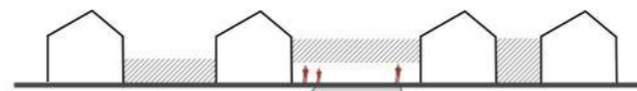


As the fences of the yards were torn down, new central courtyards showed up

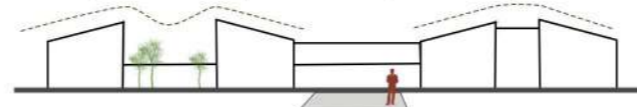


Use the 'inside streets' that conform to the neighborhood to connect each space

The spaces between the gables form differently in response to architectural relationships

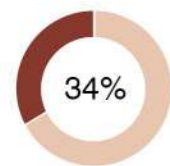


Functional adjustments also take place in the roof spaces of old neighborhoods

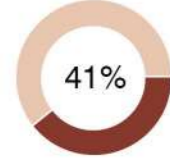


## DAILY ROUTES

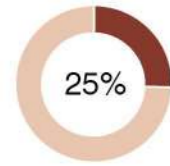
6:00 8:00 10:00 12:00 14:00 16:00 18:00 20:00 22:00



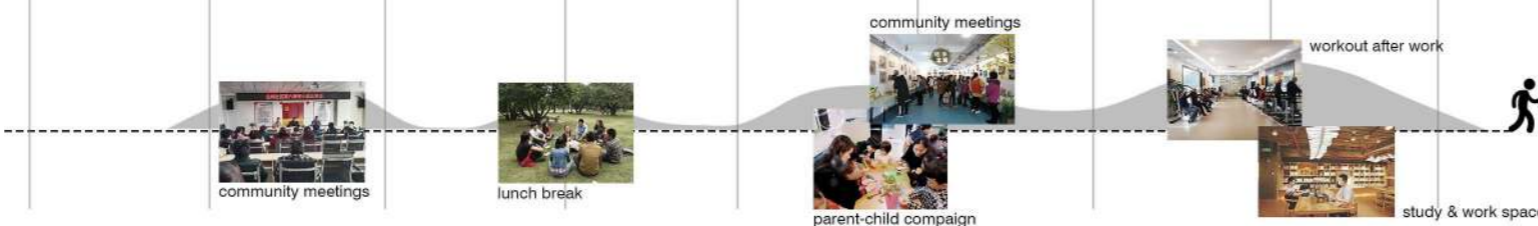
Eldly Nearby



Elderly Residents

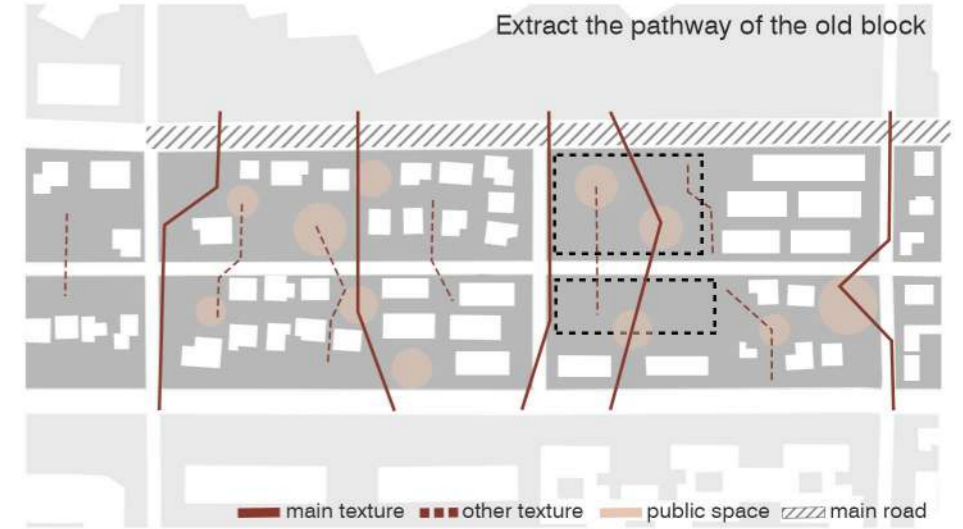


Other Visitors



# CONCEPT

Extract the pathway of the old block

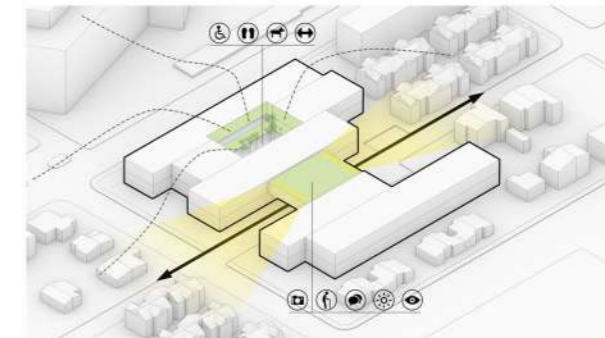


main texture other texture public space main road



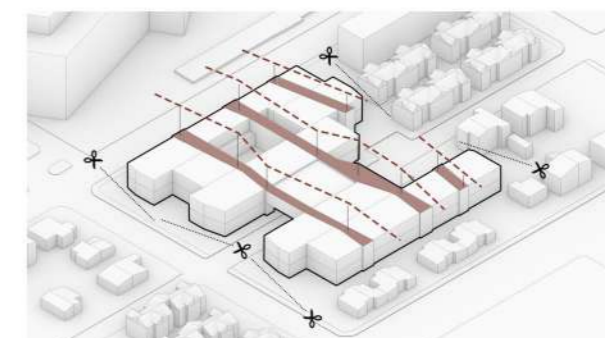
1. The basic volume of different functions

The north of the site is more noisy, so the north part is for public, while the south side is for a nursing home, an activity box above the internal road is used as a connector



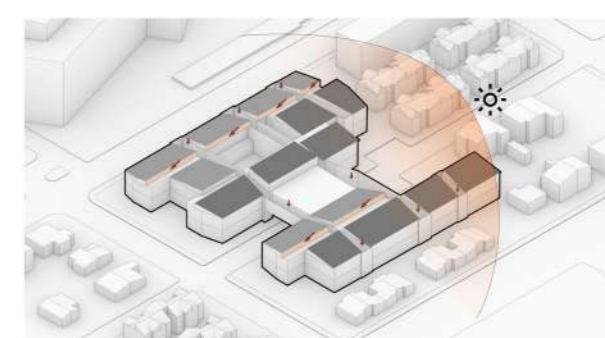
2. Central courtyard and roof garden

Dig out the atrium space for the community, and design a roof garden above the road, which has the best view, sunlight and accessibility



3. Corridor space that conforms to the texture

According to the self-contained texture of the old building, the traffic space of the community center is formed, and the shape is cut



4. Reproduction of the sloping roof form

To respect old architectural elements, raise the sloped roof and use side skylights to introduce sunlight



**Street Corner:** Looking at the community center from a street corner in the northwest direction, the building complements the environment and attracts local residents



**Roof Garden:** The roof garden located above Fengming Street mainly serves the elderly and consists of a flower area, a negotiation area, and a healthy area



**Nursing Homes:** On the south side, living units and activity spaces are designed, where the elderly can look at the old block, while comfortably enjoying their old age



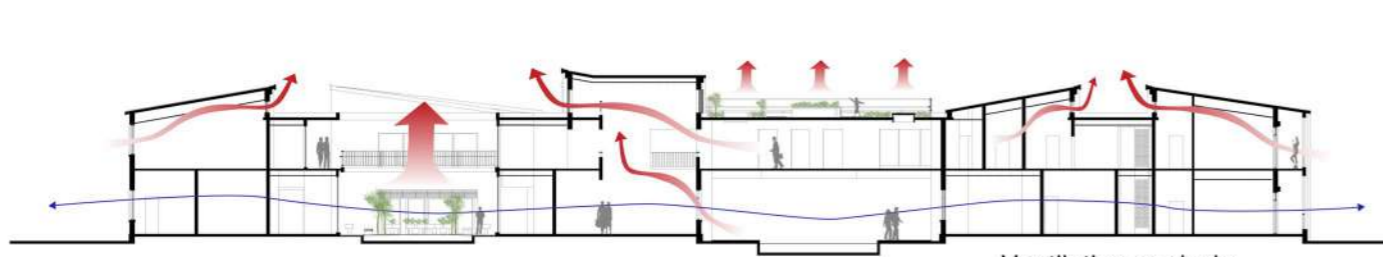
Planting area and multi-purpose platform



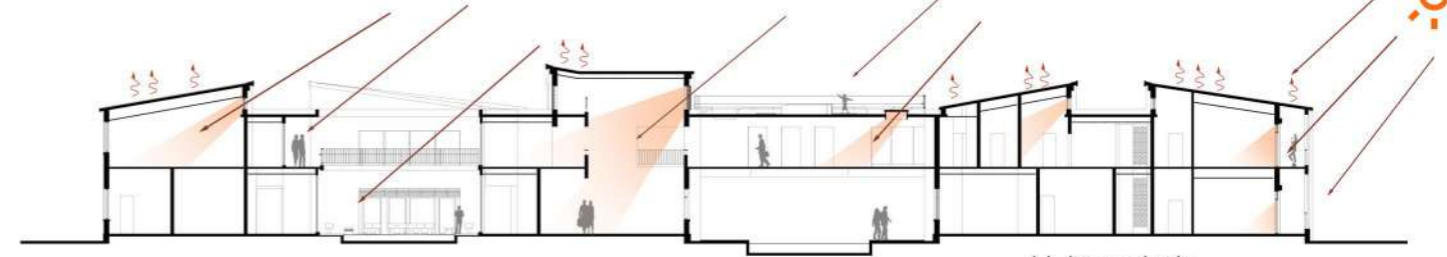
Elderly' Activity Hall



Public space for dormitories



Ventilation analysis



Light analysis



Detail

Activity Hall

Public Space

Planting Area

SECTION PERSPECTIVE

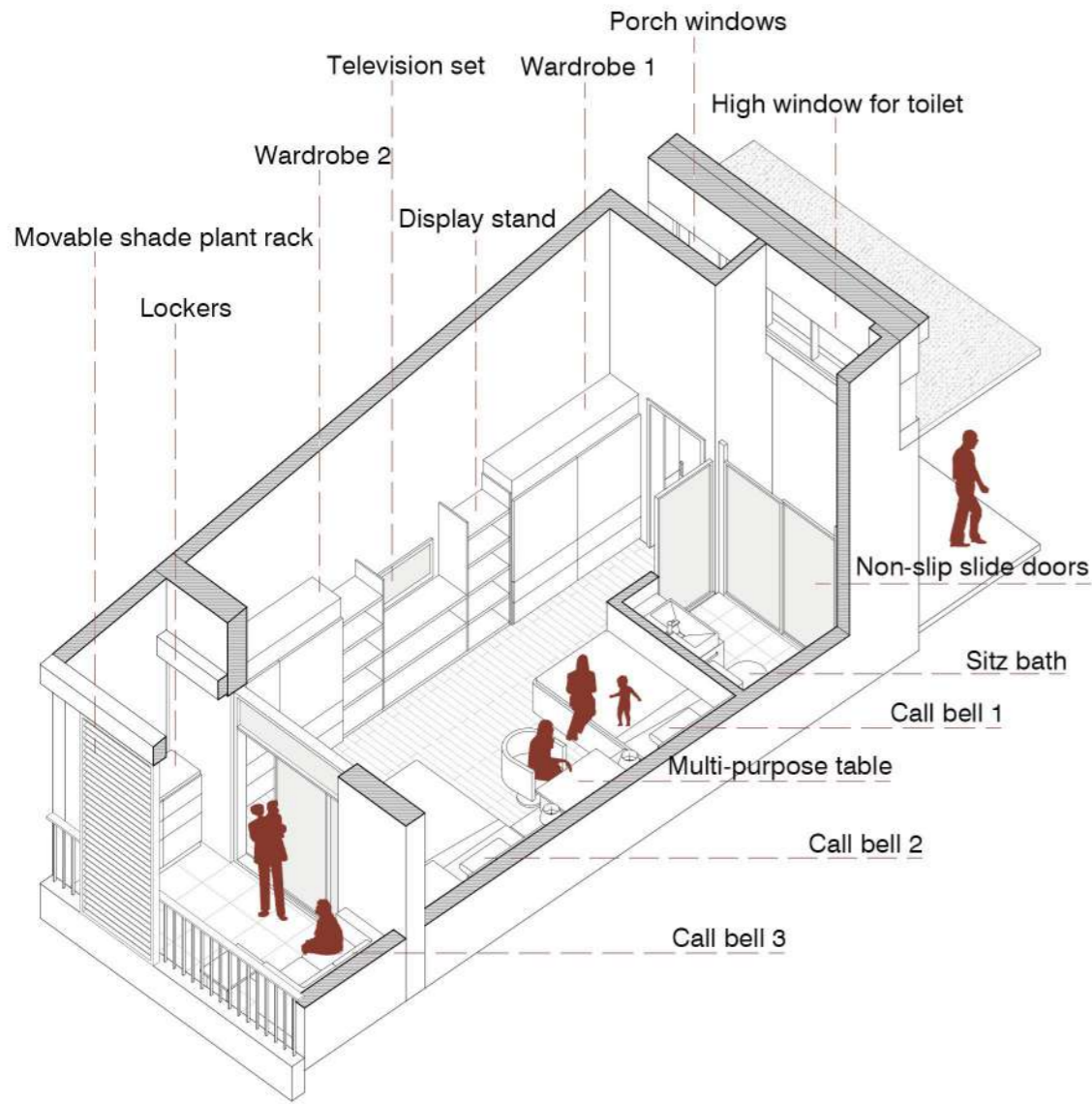


### Final Model

By making handmade models, I better sorted out the relationship between the building and the historic district. Instead of trying to create new things, the community center for the elderly should reflect more respect for the environment and former occupants.



## AXONOMETRIC UNIT DRAWING



### Double room

On the south side of the community center is connected a nursing home. Equipped with public activity space and multiple accommodation units, the nursing home can provide a better living environment for up to 50 elderly people. Slope roof for the elderly provides good two-way lighting, ventilation and open indoor space. Independent supporting facilities can meet the basic needs of different elderly people. Balconies create a good space experience. Most importantly, the street scene of Fengming Street, which introduces the room, makes the old people feel as if they are still living in the previous house and in the previous time.

## OTHER ROOM TYPE



### Single room

- Designed for the disabled
- Also for those who enjoy detergency
- Convenient for car-regivers and family visits

### Suite room

- Designed for elderly spouses
- Layout similar to apartments
- More equipments

## HIERARCHICAL AXONOMETRIC DRAWING

